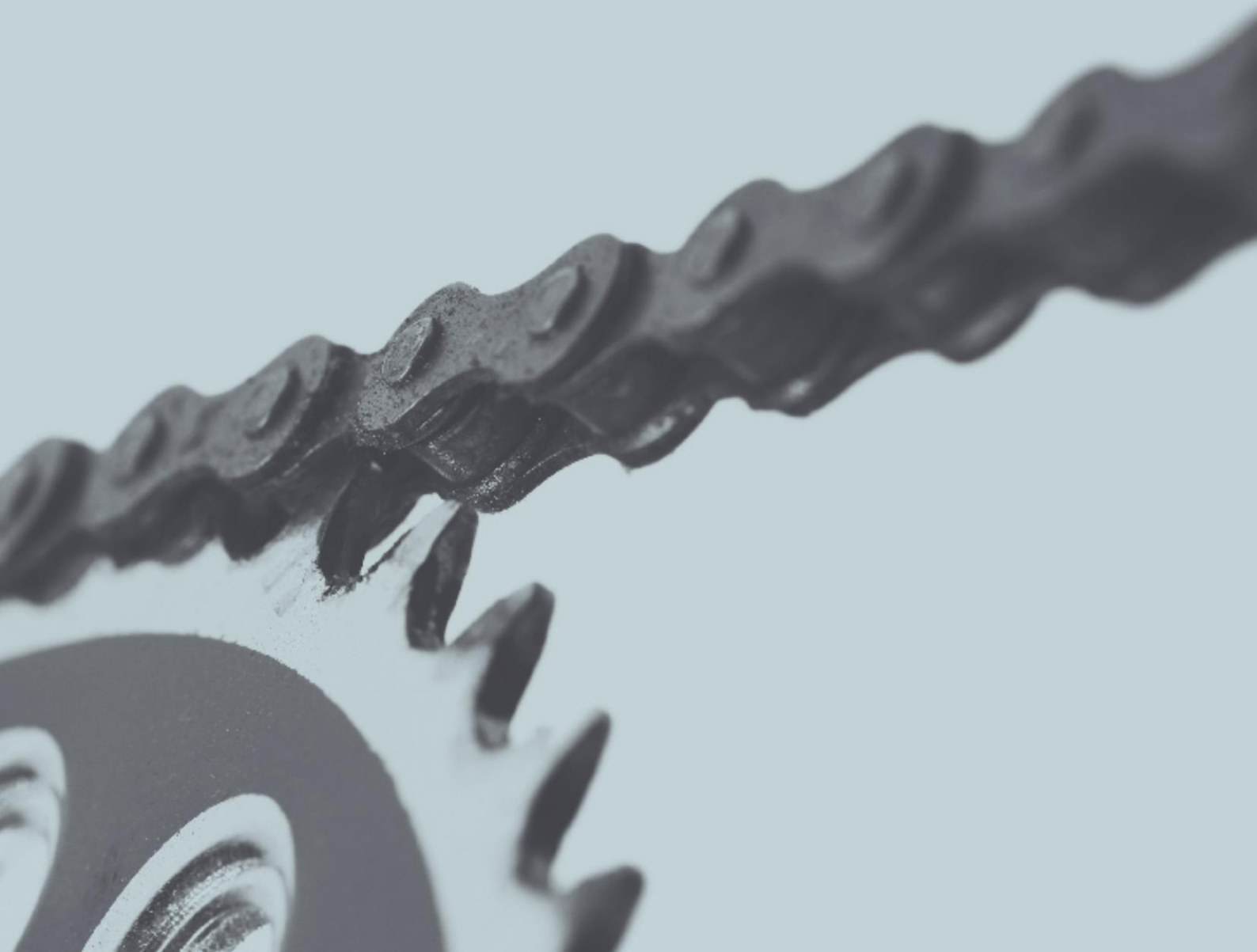


Coca-Cola
zero

belfast
bikes

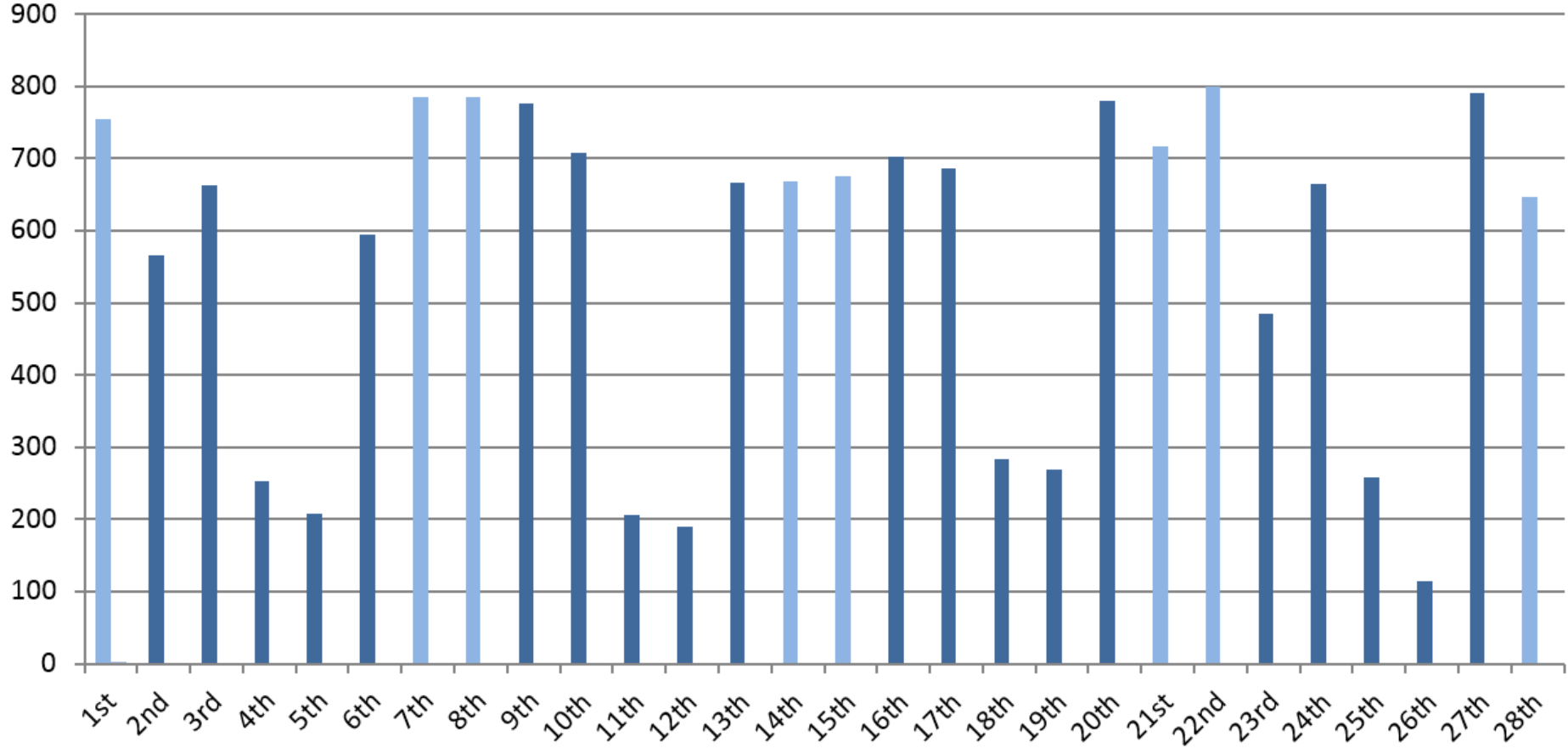
Performance Indicators

February 2017



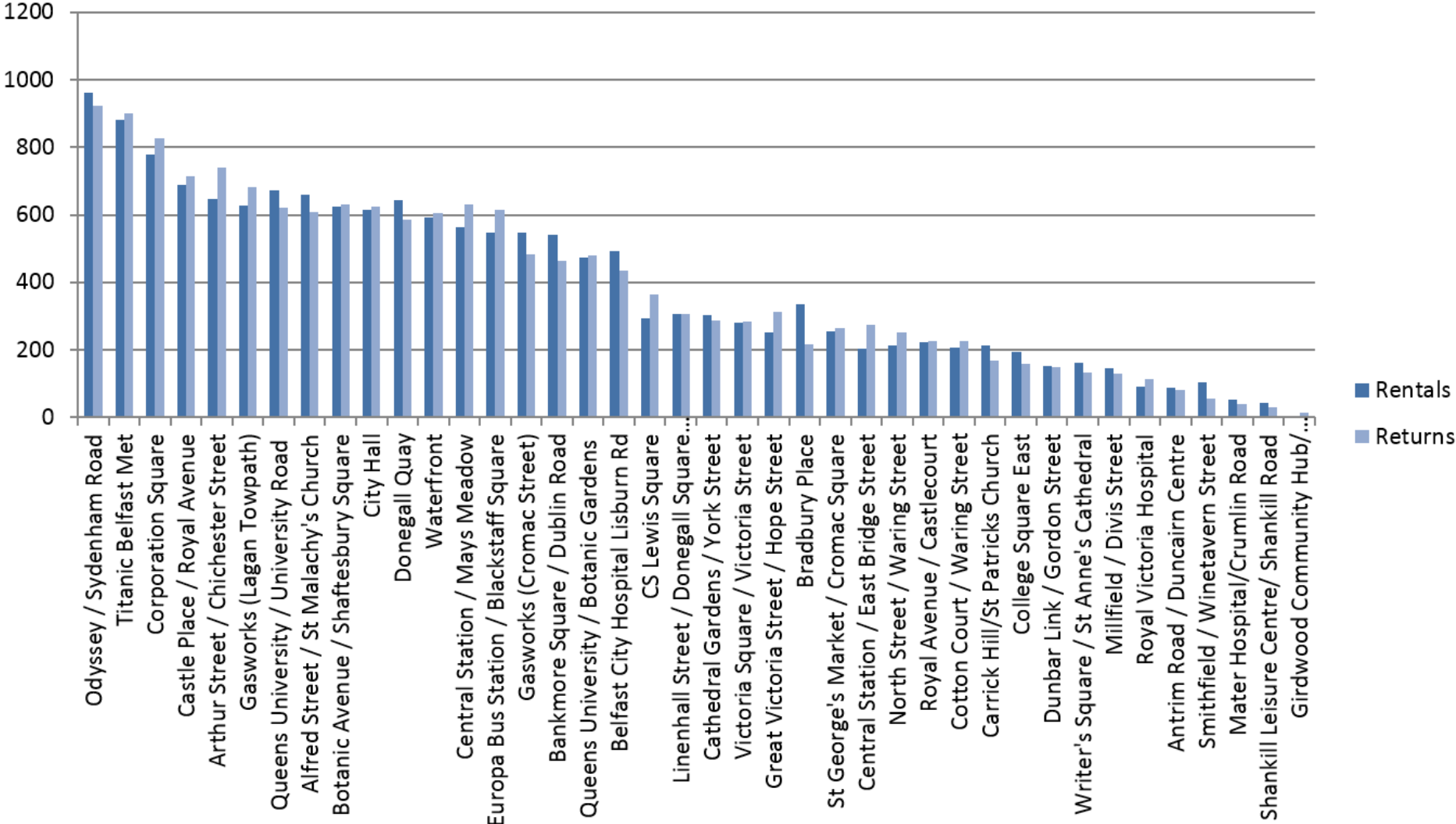
February 2017

During the month of February, there were **17,273** rentals. The rental fluctuations are shown below:



February 2017

The most popular stations in February for renting and returning combined were: (1) Odyssey (2) Titanic (3) Corporation Square



February 2017

The total rentals to the end of February were **388,773**. The monthly fluctuations of rentals from the launch of the scheme are shown below.

